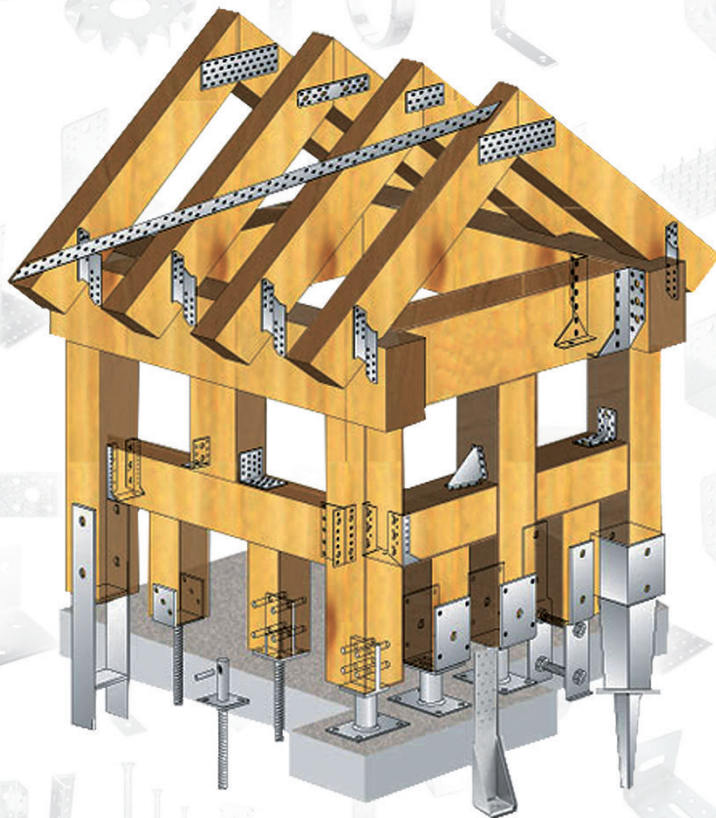
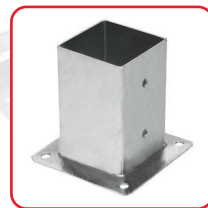
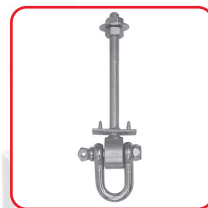
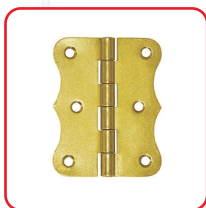


FIXING your dreams with us

FIXING, s.r.o.
Hrádok 228
Istebné 027 53
Slovakia



CONTENT

GROUND SCREWS	3 - 4
ANCHOR BRACKETS	5 - 11
WOODEN BRACKETS	12 - 19
THREADED RODS	20 - 21
NUTS, WASHERS	22 - 23
COMMON NAILS,CARDBOARD NAILS, CONVEX NAILS	24 - 25
TURBO SCREWS, CARDBOARD SCREWS	26 - 27
TEX SELF TAPPING SCREWS, WINDOW SCREWS	28
CONSTRUCTION WOOD SCREWS, TERRACE SCREWS, STAINLESS STEEL SCREWS	29 - 30
HEXAGONAL, CRISIS, TORX HEAD WOOD CREWS	31 - 34
FARM SCREWS	35
PLASTIC POLYPROPYLENE PLUGS WITH COUNTERSUNK HEAD SCREWS	36
WEDGE ANCHOR	37
DOCK SCREWS DIN 603	38
METRIC SCREWS WITH WITH FULL AND PARTIAL THREAD	39
HINGES, JOINTS, HOLDERS	40 - 41
BLACK POWDER COATING HINGES, FORGED	42 - 43
LOCKING HINGES, PLUGS, SWING HANGERS	44 - 46
HANGING EYES, TENSIONERS, CHEMICAL ANCHORS	47 - 48
ADHESIVES, POLYURETHANE FOAMS – TYTAN BRAND	49
SPANNERS SET, TOOLS CASE	50 - 51
PLASTIC BOXES	52
RACKS	53 - 55

GROUND SCREWS

Use:

The use of drill points in the construction of wooden structures (and not only them) is very effective. Their installation is quick, precise and very simple. Installation can be done without special tools. The advantage is also their easy disassembly and the possibility of reuse.

Use: construction of terraces (support grid), gazebos,shelters, installation of wooden beams in general, wooden railings...

Ideally, it is advisable to check the hardness of the subsoil by pressing a thicker rods or a iron stick. The substrate should not be waterlogged and should not have a high content of silt and sand.

- Ground screw with „U” adjustable 84 - 160

Catalog number	Dimension in (mm)	Package pcs
208500	800 x 125 x 84 - 160	6



- Ground screw with reductions

Catalog number	Dimension in (mm)	Package pcs
208449	Total lenght 650mm; Ø 60mm of reduction: Ø59mm, Ø54mm, Ø49mm, Ø44mm Ø35mm, Ø24mm	6



- Height – adjustable ground screw with the plate I

Catalog number	Dimension in (mm)	Package pcs
208080	Adjustable plate until 225mm, diameter of top plate 80mm, total lenght 750mm	6
208110	Adjustable plate until 225mm, diameter of top plate 80mm, total lenght 800mm	6



GROUND SCREWS

Use:

Drilling point with a square socket or a round socket a tip is used for anchoring posts, prism or pillars into the clay subsoil. As a result to this, the wood is not in contact with moist soil, and thus its wetting and subsequent damage is rapidly reduced.

Wood construction or a wooden fence, can therefore be realized without additional costs for excavation work and concreting, and it is also possible to dismantle the wooden brackets at any time and move it to another place.

A round anchor point can be used for the log.

Ideally, it is advisable to examine the hardness of the substrate by pressing a thicker roxor or a stick. The substrate should not be waterlogged and should not have a high content of silt and sand.

Before the actual hammering of the anchor point, it is possible to pre-drill small holes for easier hammering and stabilization of the point in the vertical direction.

Hammer the spikes with a small wooden prism, otherwise the metal profile may be deformed. After installing the anchoring spike and prism, fix the wood through the mounting holes with a bolt, screw or threaded rod.

• Spikes

Catalog number	Dimension in (mm)	Package pcs
201701	70 x 150 x 750	8
201901	90 x 150 x 750	8
2011001	100 x 150 x 900	4
2011221	120 x 150 x 750	4
201140	140 x 150 x 900	4



• Round spikes

Catalog number	Dimension in (mm)	Package pcs
20281	80 x 150 x 750	1
202103	100 x 150 x 750	1



Y - BRACKETS

Use:

Anchors type „U“ with ribs are used to vertical and horizontal wooden structures to concrete, if there is no base plate. They are used for fixing wooden buildings, slides, pergolas, garden houses, carports and others.

- Wide „U“ with rib (Ø 20)

Catalog number	Dimension in (mm)	Package pcs
500100	100 x 100 x 125 x 4	1
500120	120 x 120 x 125 x 4	1
500140	140 x 120 x 125 x 4	1
500150	150 x 120 x 125 x 4	1



- „U“ with rib (Ø 18)

Catalog number	Dimension in (mm)	Package pcs
30070 A	70 x 60 x 100 x 4 x 200	1
30080 A	80 x 60 x 100 x 4 x 200	1
30090 A	90 x 60 x 100 x 4 x 200	1
300100 A	100 x 60 x 100 x 4 x 200	1
300120 A	120 x 60 x 100 x 4 x 200	1
300140 A	140 x 60 x 100 x 4 x 200	1
300150 A	150 x 60 x 100 x 4 x 200	1



- „U“ with rib (Ø 20)

Catalog number	Dimension in (mm)	Package pcs
30170	70 x 60 x 100 x 4 x 200	10
30180	80 x 60 x 100 x 4 x 200	10
30190	90 x 60 x 100 x 4 x 200	10
301100	100 x 60 x 100 x 4 x 200	10
301120	120 x 60 x 100 x 4 x 200	10
301140	140 x 60 x 100 x 4 x 200	10
301150	150 x 60 x 100 x 4 x 200	10



Y - BRACKETS

- „U” with rib - 400mm rib (Ø 18)

Catalog number	Dimension in (mm)	Package pcs
400100	100 x 60 x 100 x 4 x 400	8
400120	120 x 60 x 100 x 4 x 400	8
400140	140 x 60 x 100 x 4 x 400	8
400150	150 x 60 x 100 x 4 x 400	8



- „U” with rib wide adjustable

Catalog number	Dimension in (mm)	Package pcs
30980160	80 - 160 x 80 x 100 x 4 x 200	4



- „U” performed with rib

Catalog number	Dimension in (mm)	Package pcs
40780	80 x 80 x 125/18 x 250	4
407100	100 x 100 x 125/18 x 250	4
407120	120 x 120 x 125/20 x 250	4
407140	140 x 120 x 125/20 x 250	4



- Concrete anchor „L” with rib

Catalog number	Dimension in (mm)	Package pcs
30548	120 x 48 x 40, Ø16 x 250	1
30570	90 x 70 x 60, Ø16 x 200	1
305100	120 x 100 x 70, Ø16 x 250	1



Y - BRACKETS

- Concrete anchor „A“ (Ø 20)

Catalog number	Dimension in (mm)	Package pcs
311105	105 x 70 x 70 x 4 x 200	1

- Concrete anchor with rib (Ø 16)

Catalog number	Dimension in (mm)	Package pcs
30902	90 x 200	10



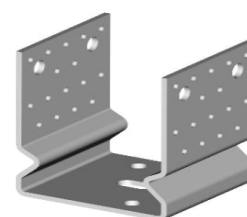
ANCHOR ELEMENTS "U" with reinforced

Use:

For fixing wooden prisms to a concrete base. It is fixed directly to the concrete using chemical mortar and rib, concrete screw or a threaded expansion anchor. Overlay prevents rotting of the wooden prism.

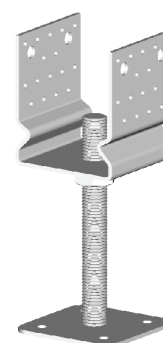
• Wide „U” with reinforced

Catalog number	Dimension in (mm)	Package pcs
50780	80 x 80 x 125 x 4	10
507100	100 x 100 x 150 x 4	10
507120	120 x 120 x 150 x 4	10
507140	140 x 120 x 150 x 4	10
507150	150 x 120 x 150 x 4	10



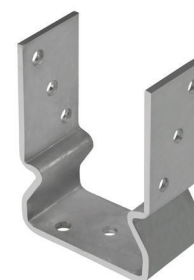
• „U” with reinforced high adjustable

Catalog number	Dimension in (mm)	Package pcs
607100	100 x 100 x 125/M24 x 200	4
607120	120 x 120 x 125/M24 x 200	4
607140	140 x 120 x 125 /M24 x 200	4



• Anchor type „U”with reinforced

Catalog number	Dimension in (mm)	Package pcs
30770	70 x 60 x 150 x 4	10
30780	80 x 60 x 150 x 4	10
30790	90 x 60 x 150 x 4	10
307100	100 x 60 x 150 x 4	10
307120	120 x 60 x 150 x 4	10
307140	140 x 60 x 150 x 4	10



ANCHOR ELEMENTS

- Anchor type „U”

Catalog number	Dimension in (mm)	Package pcs
20590	90 x 60 x 100 x 4	8
205100	100 x 60 x 100 x 4	8
205120	120 x 60 x 100 x 4	8
205140	140 x 60 x 100 x 4	8



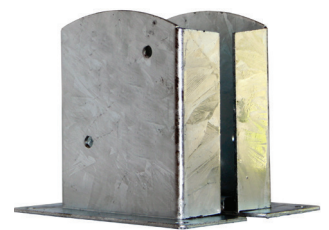
- Landing supporting shoes

Catalog number	Dimension in (mm)	Package pcs
10170	150 x 150 x 70 x 2,0	1
10180	150 x 150 x 80 x 2,0	1
10190	150 x 150 x 90 x 2,0	1
101100	150 x 150 x 100 x 2,5	1
101120	180 x 150 x 120 x 2,5	1
101140	200 x 150 x 140 x 2,5	1
101160	220 x 150 x 160 x 3,0	1
101200	260 x 150 x 200 x 3,0	1



- Landing supporting shoes wide adjustable

Catalog number	Dimension in (mm)	Package pcs
105121	80 x 160 x 120 x 45 x 200 x 2	1
105141	80 x 160 x 140 x 45 x 200 x 2	1
105161	92 x 240 x 161 x 57 x 200 x 4	1



- Console, tube (Ø 48 x 3)

Catalog number	Dimension in (mm)	Package pcs
405100	150 x 100 x 4 x 100	1
405150	150 x 100 x 4 x 150	1



ANCHOR ELEMENTS adjustable in height and width

Use:

Simplifies the assembly of wooden elements with concrete.

The setting allows you to determine the height or width of the mounted element.

Material: S235 + EZP

- Height – adjustable anchor with a plate with a loose nut

Catalog number	Dimension in (mm)	Package pcs
PSR 80	80 x 200 x M24	4
PSR 110	110 x 200 x M24	4



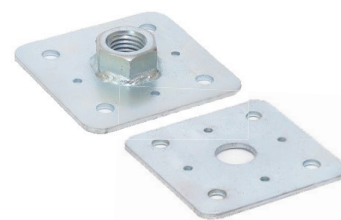
- Height – adjustable anchor with a plate with a welded nut

Catalog number	Dimension in (mm)	Package pcs
PSR 80_1	80 x 200 x M24	4
PSR 110_1	110 x 200 x M24	4



- Square top plate with welded and loose nut

Catalog number	Dimension in (mm)	Package pcs
313110	110 x 110 x 4 loose nut	1
313111	110 x 110 x 4 welded nut M24	1



- Anchor „U” wide and height adjustable

Catalog number	Dimension in (mm)	Package pcs
412100	160 x 100 x 100 x 80 x 80 -160 thickness 4 mm	1



- Anchor „U” wide adjustable on the tube

Catalog number	Dimension in (mm)	Package pcs
407150	180 x 100 x 80 x 80 -160	10



SCREWS to the anchoring elements

Use:

HBS part EVO screw is intended for external steel-to-wood connection.

The special finish is ideal for use in service class 3 or with aggressive or chemically treated woods.

Special 20 µm multi-layer coating C4 EVO with surface treatment = epoxy resin and aluminum flakes showed no rust after 1440 hours of salt spray exposure testing, according to ISO 9227.

Made of carbon steel with a surface treatment that is highly resistant to corrosion, it can be used in Class 3 external applications and in Class C4 atmospheric corrosion conditions.

- Screws belong to various of Anchors

Catalog number	Dimension in (mm)	Package pcs
HBS 840	8 x 40	100
HBS 860	8 x 60	100
HBS 880	8 x 80	100



We recommend applying to all anchoring elements

ANGLE BRACKETS

Use:

Angles are produced in different lengths and thicknesses. They are used in joints where high tensile, shear and rocking capabilities are required.

Due to the number and arrangement of fastening holes, it can be used for both wood-wood and wood-concrete connections.

• Perforated angle brackets KP

Catalog number	Dimension in (mm)	Package pcs
D0041 KP1	90 x 90 x 65 x 2,5	50
D0042 KP2	105 x 105 x 90 x 2,5	50
D0043 KP3	90 x 50 x 55 x 2,5	50
D0044 KP4	70 x 70 x 55 x 2,5	50
D0045 KP5	90 x 90 x 65 x 2,0	50
D0046 KP6	70 x 70 x 55 x 2,0	50
686109293 BKP 20	105 x 105 x 90 x 2,0	50
D004125 KP 25	125 x 125 x 65 x 3	50
D004150 KP 50	150 x 150 x 90 x 3	25



• Angle brackets KL

Catalog number	Dimension in (mm)	Package pcs
D0051 KL1	50 x 50 x 35 x 2,5	100
D0052 KL2	70 x 70 x 55 x 2,5	100
D0053 KL3	50 x 150 x 35 x 2,5	100
D0054 KL4	90 x 90 x 65 x 2,5	50
D0055 KL5	105 x 105 x 90 x 2,5	50



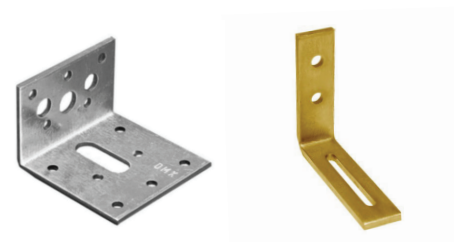
• Angle brackets KK

Catalog number	Dimension in (mm)	Package pcs
D0071 KK1	40 x 200 x 40 x 2	20
D0072 KK2	40 x 300 x 40 x 2	20
D0073 KK3	40 x 400 x 40 x 2	20



• Angle brackets KR

Catalog number	Dimension in (mm)	Package pcs
D0081 KR1	80 x 65 x 20 x 4	20
D0082 KR2	60 x 40 x 60 x 3	20



ANGLE BRACKETS

• Angle brackets – heavy duty KR

Catalog number	Dimension in (mm)	Package pcs
1005500 KR95L	95 x 85 x 65 x 4	25
1006500 KR135L	135 x 85 x 65 x 4	25
1008500 KR285L	285 x 85 x 65 x 4	25



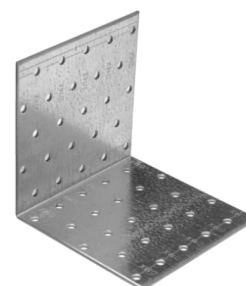
• Angle brackets KU

Catalog number	Dimension in (mm)	Package pcs
D101 KU1	25 x 25 x 30 x 1,0	20
D102 KU2	30 x 30 x 25 x 2,0	20
D103 KU3	40 x 40 x 20 x 2,0	20
D104 KU4	40 x 40 x 40 x 2,0	20



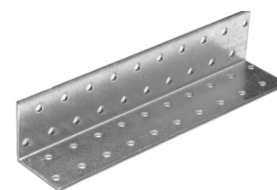
• Angle brackets KM

Catalog number	Dimension in (mm)	Package pcs
D0061 KM1	40 x 40 x 40 x 2	50
D0062 KM2	40 x 40 x 60 x 2	50
D0063 KM3	60 x 60 x 40 x 2	20
D0064 KM4	60 x 60 x 60 x 2	20
D0065 KM5	60 x 60 x 80 x 2	20
D0066 KM6	60 x 60 x 100 x 2	20
D0067 KM7	80 x 80 x 40 x 2	20
D0068 KM8	80 x 80 x 60 x 2	20
D0069 KM9	80 x 80 x 80 x 2	20
D00610 KM10	80 x 80 x 100 x 2	20
D00611 KM11	100 x 100 x 60 x 2	20
D00612 KM12	100 x 100 x 80 x 2	20
D00613 KM13	100 x 100 x 100 x 2	20
D00614 KM14	40 x 40 x 100 x 2	20
D00615 KM15	40 x 40 x 150 x 2	20



KM14

KM15



• Angle brackets KB

Catalog number	Dimension in (mm)	Package pcs
D0031 KB1	100 x 75 x 30 x 3	20
D0032 KB2	120 x 80 x 35 x 4	10
D0033 KB3	180 x 120 x 40 x 5	10



ANGLE BRACKETS

• Angle brackets KS

Catalog number	Dimension in (mm)	Package pcs
D0021 KS1	30 x 30 x 30 x 2	50
D0022 KS2	40 x 40 x 40 x 2	50
D0023 KS3	60 x 60 x 60 x 2	50



• Angle brackets KW

Catalog number	Dimension in (mm)	Package pcs
D0011 KW1	25 x 25 x 17 x 2	50
D0012 KW2	40 x 40 x 17 x 2	50
D0013 KW3	50 x 50 x 17 x 2	20
D0014 KW4	75 x 75 x 17 x 2	20
D0015 KW5	100 x 100 x 20 x 4	20
D0016 KW6	125 x 125 x 20 x 4	20
D0017 KW7	150 x 150 x 25 x 5	20



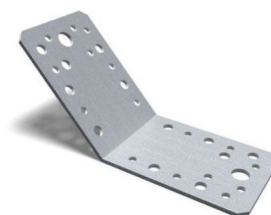
• Angle brackets RUU

Catalog number	Dimension in (mm)	Package pcs
D301 RUU1	60 x 35 x 60 x 2,5	20
D302 RUU2	70 x 70 x 55 x 2,5	20
D303 RUU3	90 x 35 x 40 x 2,5	20
D304 RUU4	90 x 55 x 55 x 2,5	20
D305 RUU5	50 x 50 x 50 x 2,5	20
D306 RUU6	50 x 65 x 60 x 2,0	20



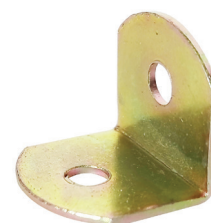
• Angle 135° isosceles

Catalog number	Dimension in (mm)	Package pcs
13510590	105 x 105 x 90	25
1359065	90 x 90 x 65	50



• Furniture angle

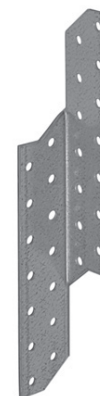
Catalog number	rozmery výrobku v (mm)	Package pcs
BS 0342-19	19	200 ks



ANGLE BRACKETS

- Rafter purling anchor LK

Catalog number	Catalog number	Package pcs
D00221 LK1	40 x 170 x 2 left	20
D00221-1 LK2	40 x 170 x 2 right	20
D00222 LK3	40 x 210 x 2 left	20
D00222-1 LK4	40 x 210 x 2 right	20
D00223 LK5	40 x 250 x 2 left	20
D00223-1 LK6	40 x 250 x 2 right	20
D00224 LK7	40 x 290 x 2 left	20
D00224-1 LK8	40 x 290 x 2 right	20



- Flat perforated plate LP

Catalog number	Catalog number	Package pcs
D00121 LP1	100 x 35 x 2,5	20
D00122 LP2	140 x 55 x 2,5	20
D00123 LP3	200 x 35 x 2,5	20
D00124 LP4	280 x 55 x 2,5	20
D00125 LP5	180 x 65 x 2,5	20
D00126 LP6	210 x 90 x 2,5	20



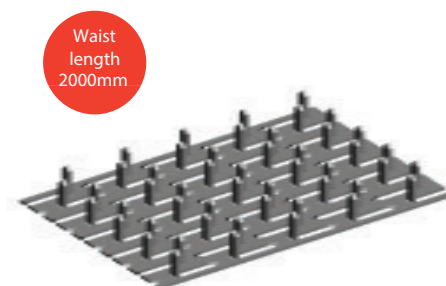
- Nails plate DS lenght 205mm

Catalog number	Catalog number	Package pcs
D 20577	77 x 205 x 1	20
D 205105	105 x 205 x 1	20
D 205133	133 x 205 x 1	20



- Nails plate DS lenght 2000mm

Catalog number	Catalog number	Package pcs
D15103	103 x 2000 x 1,5	1
D 15145	145 x 2000 x 1,5	1
D 15206	206 x 2000 x 1,5	1



ANGLE BRACKETS

- Perforated plate PP

Catalog number	Dimension in (mm)	Package pcs
D00101 PP1	40 x 80 x 2	20
D00102 PP2	40 x 100 x 2	20
D00103 PP3	40 x 120 x 2	20
D00104 PP4	40 x 160 x 2	20
D00105 PP5	60 x 140 x 2	20
D00106 PP6	60 x 160 x 2	20
D00107 PP7	60 x 200 x 2	20
D00108 PP8	60 x 240 x 2	20
D00109 PP9	80 x 200 x 2	20
D001010 PP10	80 x 220 x 2	20
D001011 PP11	80 x 300 x 2	10
D001012 PP12	100 x 200 x 2	25
D001013 PP13	100 x 240 x 2	25
D001014 PP14	100 x 260 x 2	25
D001015 PP15	100 x 300 x 2	10
D001016 PP16	100 x 400 x 2	10
D001017 PP17	100 x 500 x 2	10
D001018 PP18	120 x 200 x 2	10
D001019 PP19	120 x 240 x 2	10
D001020 PP20	120 x 260 x 2	10
D001021 PP21	120 x 300 x 2	10
D01022 PP22	140 x 400 x 2	10
D001023 PP23	160 x 400 x 2	10
D001024 PP24	200 x 300 x 2	10
D001025 PP25	40 x 1200 x 2	10
D001026 PP26	60 x 1200 x 2	10



- Disc dowel PZD

Catalog number	Dimension in (mm)	Package pcs
D00231 PZD - 1	17 x 48 x 1	20
D00234 PZD - 2	21 x 62 x 1	20
D00232 PZD - 3	26 x 75 x 1	20
D00233 PZD - 4	95 x 33 x 1	20



- Flat connecting strips

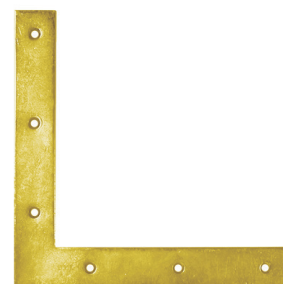
Catalog number	Dimension in (mm)	Package pcs
2725200	25 x 2,0 x 25	1 bal/1m
2742000	40 x 2,0 x 50	1 bal/1m
2761500	60 x 1,5 x 50	1 bal/1m



ANGLE BRACKETS - yellow zinc

- Anchor type „L“ flat

Catalog number	Dimension in (mm)	Package pcs
D00211 NA1	150 x 150 x 25 x 2,5	10
D00212 NA2	200 x 200 x 30 x 3,0	10
D00213 NA3	250 x 250 x 30 x 3,0	10
D00214 NA4	300 x 300 x 40 x 2,0	10
D00215 NA5	50 x 50 x 10 x 2,0	50
D00216 NA6	60 x 60 x 10 x 2,0	50
D00217 NA7	75 x 75 x 12 x 2,0	50
D00218 NA8	100 x 100 x 15 x 2,0	50



- Anchor type „T“ flat

Catalog number	Dimension in (mm)	Package pcs
D00219 KT1	70 x 50 x 16	50
D00220 KT2	150 x 127 x 38	20



- Fittings for pergolas

Catalog number	Dimension in (mm)	Package pcs
OP3315	38 x 34 x 15	20
OP3318	38 x 34 x 18	20
OP3320	38 x 34 x 20	20



- Brackets type LW

Catalog number	Dimension in (mm)	Package pcs
LW40152 LW1	40 x 15 x 2	50
LW50152 LW2	50 x 15 x 2	50
LW75152 LW3	75 x 15 x 2	50
LW80152 LW4	80 x 15 x 2	50
LW100152 LW5	100 x 15 x 2	50
LW150204 LW6	150 x 20 x 4	20
LW17518 LW7	175 x 18 x 2.5	20
LW190204 LW8	190 x 20 x 4	20
LW20019 LW9	200 x 19 x 2.5	20
LW240204 LW10	240 x 20 x 4	20



ANGLE BRACKETS

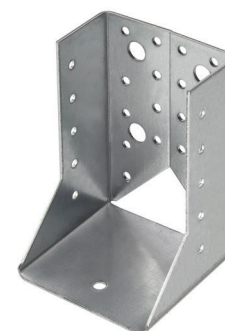
- Column shoes outer WB

Catalog number	Dimension in (mm)	Package pcs
D00151 WB1	25 x 118 x 2	10
D00154 WB4	38 x 171 x 2	10
D00155 WB5	41 x 110 x 2	10
D00156 WB6	41 x 140 x 2	10
D00157 WB7	41 x 170 x 2	10
D00159 WB9	45 x 138 x 2	10
D001510 WB10	51 x 105 x 2	10
D001511 WB11	51 x 135 x 2	10
D001512 WB12	51 x 165 x 2	10
D001513 WB13	51 x 195 x 2	10
D001514 WB14	60 x 100 x 2	10
D001515 WB15	60 x 130 x 2	10
D001516 WB16	60 x 160 x 2	10
D001517 WB17	60 x 190 x 2	10
D001518 WB18	60 x 220 x 2	10
D001519 WB19	64 x 98 x 2	10
D001520 WB20	64 x 128 x 2	10
D001521 WB21	70 x 125 x 2	10
D001522 WB22	70 x 155 x 2	10
D001524 WB24	76 x 152 x 2	10
D001526 WB26	80 x 120 x 2	10
D001527 WB27	80 x 150 x 2	10
D001528 WB28	80 x 180 x 2	10
D001529 WB29	80 x 210 x 2	10
D001530 WB30	100 x 140 x 2	10
D001531 WB31	100 x 170 x 2	10
D001532 WB32	100 x 200 x 2	10
D001533 WB33	115 x 163 x 2	10
D001535 WB35	120 x 160 x 2	10
D001536 WB36	120 x 190 x 2	10
D001537 WB37	140 x 180 x 2	10
D001538 WB38	160 x 170 x 2	10



- Column shoes inner WBZ

Catalog number	Dimension in (mm)	Package pcs
D00177 WBZ27	80x150x2	10
D00178 WBZ28	80x180x2	10
D00179 WBZ29	80x210x2	10
D001710 WBZ30	100x140x2	10
D001711 WBZ31	100x170x2	10
D001712 WBZ32	100x200x2	10
D001713 WBZ33	115x163x2	10
D001714 WBZ34	115x193x2	10



ANGLE BRACKETS

- Column shoes devided

Catalog number	Dimension in (mm)
66431220	30 x 120 x 2 pár L+P
66431520	30 x 150 2 L+P



- Screws belong to Angle brackets

Catalog number	Dimension in (mm)	Package pcs
11984	4,8 x 40	500



We recommend applying to all angle brackets

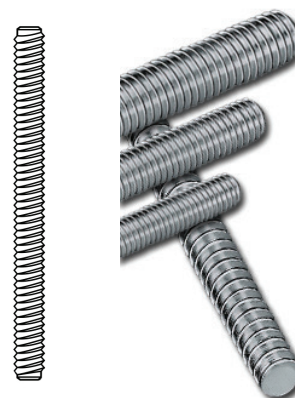
THREADED RODS

Use :

Threaded rods are a universal connecting element, used in all areas of Industry. Threaded rods are produced in various strengths, materials and surface treatments. Bars of strength 4.8 are mainly used as connecting material for the assembly of wooden trusses and wooden structures. Strength threaded rods of strength 8.8 are intended more for the engineering and automotive industries.

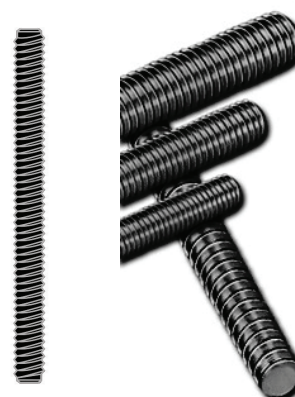
- Galvanized threaded rods DIN976, strength 4,8 - 1m

Catalog number	Dimension in (mm)	Package pcs
70005	Threaded rod M5 right	50
70006	Threaded rod M6 right	50
70008	Threaded rod M8 right	50
70010	Threaded rod M10 right	20
70012	Threaded rod M12 right	20
70014	Threaded rod M14 right	20
70016	Threaded rod M16 right	10
70018	Threaded rod M18 right	10
70020	Threaded rod M20 right	5
70022	Threaded rod M22 right	5
70024	Threaded rod M24 right	5
70027	Threaded rod M27 right	3



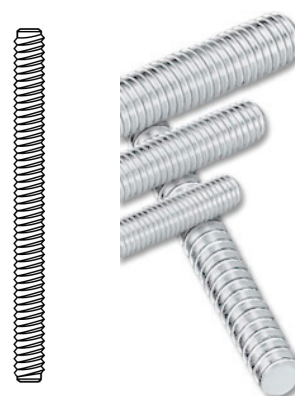
- Black threaded rods DIN976, strength 4,8 - 1m

Catalog number	Dimension in (mm)	Package pcs
60006	Threaded rod M6 right	50
60008	Threaded rod M8 right	50
60010	Threaded rod M10 right	20
60012	Threaded rod M12 right	20
60014	Threaded rod M14 right	20
60016	Threaded rod M16 right	10
60018	Threaded rod M18 right	10
60020	Threaded rod M20 right	5



- STAINLESS STEEL threaded rods A2 - 1m

Catalog number	Dimension in (mm)	Package pcs
77004	Threaded rod M4 right	100
77005	Threaded rod M5 right	100
77006	Threaded rod M6 right	100
77008	Threaded rod M8 right	50
77010	Threaded rod M10 right	25
77012	Threaded rod M12 right	20
77014	Threaded rod M14 right	10
77016	Threaded rod M16 right	10
77018	Threaded rod M18 right	10
77020	Threaded rod M20 right	5

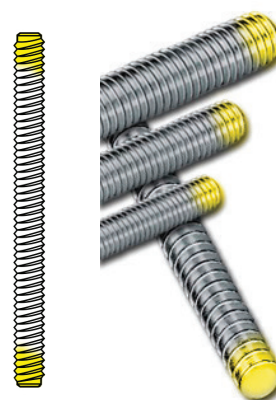


THREADED RODS

- Galvanized threaded rods, strength 8,8, DIN976, length 1m, EZP

Catalog number	Dimensions in (mm)	Package pcs
18106	Threaded rod M6 right	20
18108	Threaded rod M8 right	20
18110	Threaded rod M10 right	20
18112	Threaded rod M12 right	20
18114	Threaded rod M14 right	20
18116	Threaded rod M16 right	10
18118	Threaded rod M18 right	10
18120	Threaded rod M20 right	5
18124	Threaded rod M24 right	3
18130	Threaded rod M30 right	3
18136	Threaded rod M36 right	1

Strength
8,8



- Galvanized threaded rods, strength 4,8 DIN975, length 2m, EZP

Catalog number	Dimensions in (mm)	Package pcs
21108	Threaded rod M8 right	20
21110	Threaded rod M10 right	20
21112	Threaded rod M12 right	10
21114	Threaded rod M14 right	10

Length
2m



NUTS

- Hexagonal nuts EZP, DIN 934

Catalog number	Average	Package pcs
80005	M5	500
80006	M6	500
80008	M8	500
80010	M10	500
80012	M12	500
80014	M14	200
80016	M16	200
80018	M18	200
80020	M20	200
80022	M22	50
80024	M24	50
80027	M27	50
80030	M30	50



- Hexagonal cup nut DIN1587, strength 6

Catalog number	Average	Package pcs
8880005	M5	1000
8880006	M6	1000
8880008	M8	500
8880010	M10	200
8880012	M12	150
8880014	M14	100
8880016	M16	50
8880020	M20	25



- Hexagonal connecting/extension nut, DIN 6334

Catalog number	Average	Package pcs
877006	M6 x 18	200
877008	M8 x 24	100
877010	M10 x 30	50
877012	M12 x 36	50
877014	M14 x 42	50
877016	M16 x 48	25



NUTS, WASHERS

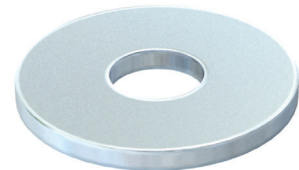
- Self – locking nut DIN 985, strength 8

Catalog number	Average	Package pcs
8990005	M5	1000
8990006	M6	1000
8990008	M8	500
8990010	M10	200
8990012	M12	100
8990014	M14	100
8990016	M16	100
8990018	M18	50
8990020	M20	50
8990024	M24	25



- Washers – large DIN 440R

Catalog number	Average	Package pcs
90005	M5	1500
90006	M6	1000
90008	M8	500
90010	M10	250
90012	M12	100
90014	M14	100
90016	M16	60
90018	M18	50
90020	M20	30
90022	M22	25
90024	M24	25
90027	M27	20



- Washers – flat DIN 125

Catalog number	Average	Package pcs
9125005	M5	2000
9125006	M6	2000
9125008	M8	1000
9125010	M10	1000
9125012	M12	500
9125014	M14	500
9125016	M16	300
9125018	M18	200
9125020	M20	200
9125022	M22	100
9125024	M24	100
9125027	M27	100
9125030	M30	100



CONSTRUCTION NAILS

Use:

The construction common nails are most common product, primarily due to its easy and quick application, but also due to its low purchase price.

It is most often used in the construction industry when joining wooden materials in the production of various structures, formwork, transport packaging, etc.

• Construction common nails 5 kg

Catalog number	Dimension in (mm)
SK2250	2,2 x 50
SK2563	2,5 x 63
SK2870	2,8 x 70
SK31080	3,1 x 80
SK35590	3,55 x 90
SK40100	4 x 100
SK40120	4 x 120
SK45130	4,5 x 130
SK50140	5 x 140
SK50150	5 x 150
SK63160	6,3 x 160
SK63180	6,3 x 180
SK63200	6,3 x 200
SK71210	7,1 x 210
SK71220	7,1 x 220
SK71230	7,1 x 230
SK80250	8 x 250
SK80260	8 x 260
SK80280	8 x 280
SK80300	8 x 300

• Construction common nails 1 kg

Catalog number	Dimension in (mm)
SK012563	2,5x63 mm
SK0131080	3,1x80 mm
SK0135590	3,55x90 mm
SK0140100	4,0x100 mm
SK0140120	4,0x120 mm

• Twisted nails 5 kg

Catalog number	Dimension in (mm)
KK2850	2,8/3,1 x 50
KK2860	2,8/3,1 x 60
KK2870	2,8/3,1 x 70
KK2880	2,8/3,1 x 80
KK3690	3,6/3,8 x 90

• Common nails EZP 5 kg

Catalog number	Dimension in (mm)
KK2850	2,8/3,1x50
KK2860	2,8/3,1x60
KK2870	2,8/3,1x70
KK2880	2,8/3,1x80
KK3690	3,6/3,8x90



COLLATED NAILS, CARDBOARD, CONVEX

- Collated nails 1 kg

Catalog number	Dimension in (mm)
KOL1216	1,2x16mm
KOL1220	1,2x20mm
KOL1225	1,2x25mm
KOL1420	1,4x20mm
KOL1425	1,4x25mm
KOL1432	1,4x32mm
KOL1436	1,4x36mm
KOL1632	1,6x32mm
KOL1636	1,6x36mm
KOL1640	1,6x40mm
KOL1840	1,8x40mm
KOL1845	1,8x45mm
KOL1850	1,8x50mm
KOL2050	2,0x50mm
KOL2250	2,2x50mm
KOL2550	2,5x50mm
KOL2560	2,5x60mm
KOL2563	2,5x63mm
KOL2870	2,8x70mm
KOL3180	3,1x80mm

- Cardboard nails twisted EZP 5 kg

Catalog number	Dimension in (mm)
KLK3628	3,6x28 mm
KLK3632	3,6x32 mm
KLK3636	3,6x36 mm

- Cardboard nails EZP 1 kg

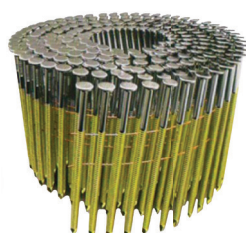
Catalog number	Dimension in (mm)
ZN KL2520	2,5x20 mm
ZN KL2520	2,5x25 mm
ZN KL2532	2,5x32 mm
ZN KL2536	2,5x36 mm

- Convex nails EZP package 250 pcs

Catalog number	Dimension in (mm)
9944000	4x40 mm
9945000	4x50 mm
9946000	4x60 mm
9947505	4x70 mm
9947500	4x75 mm

- Convex nails banded in a roll D16°

Catalog number	Dimension in (mm)
kpr2130	2,1 x 30 package 14 000 pcs
kpr2140	2,1 x 40 package 14 000 pcs
kpr2145	2,1 x 45 package 14 000 pcs
kpr2545	2,5 x 45 package 9 000 pcs
kpr2555	2,5 x 55 package 9 000 pcs
kpr2880	2,8 x 80 package 4 500 pcs
kpr31110	3,1 x 110 package 3 000 pcs
kpr33120	3,3 x 120 package 3 000 pcs



TURBO SCREWS

Use:

Turbo screw is intended for fixing window and door frames without an additional dowel. Application in concrete, masonry or aerated concrete. On plastic, wooden or metal window and door frames without tension and additional mass of masonry, concrete, solid bricks, aerated concrete, blocks, perforated bricks and natural stone. The screw doesn't deform the frame, no additional stresses arise. Easy application and screwing thanks to the smooth coating of the screw, optimal hardness and pitch of the thread. Surface protection EZP.

- Turbo screws full thread TORX

Catalog number	Dimension in (mm)
TS7552	Turbo screw 7,5x 52 TX30
TS7572	Turbo screw 7,5x 72 TX30
TS7582	Turbo screw 7,5x 82 TX30
TS7592	Turbo screw 7,5x 92 TX30
TS75102	Turbo screw 7,5x102 TX30
TS75112	Turbo screw 7,5x112 TX30
TS75122	Turbo screw 7,5x122 TX30
TS75132	Turbo screw 7,5x132 TX30
TS75152	Turbo screw 7,5x152 TX30
TS75182	Turbo screw 7,5x182 TX30



SCREWS FOR PLASTERBOARD

- PROFI Drywall screws for profile, fine thread - TN

Catalog number	Dimension in (mm)	Package
STN02535	3,5x25	1000
STN03535	3,5x35	1000
STN045035	3,5x45	1000
STN055035	3,5x55	1000
STN07042	4,2x70	250
STN08042	4,2x80	250
STN09048	4,8x90	200



- PROFI Drywall screws for wood, coarse thread - TX

Catalog number	Dimension in (mm)	Package
STX02535	3,5x25	1000
STX03535	3,5x35	1000
STX04535	3,5x45	500
STX05535	3,5x55	500
STX07042	4,2x70	250
STX09048	4,8x90	250



- PROFI Screws FN with frame head for metal profile, fine thread

Catalog number	Dimension in (mm)	Package
SFN035425	4,2x35	250
SFN045425	4,2x45	250
SFN055425	4,2x55	250



- PROFI Screws FN with frame head for wood, coarse thread

Catalog number	Dimension in (mm)	Package
SFN03542HZ	4,2x35	250
SFN04542HZ	4,2x45	250
SFN05542HZ	4,2x55	250



- PROFI Self – tapping screws with drill - 16 – TB

Catalog number	Dimension in (mm)	Package
STB02535	3,5x25	1000
STB03535	3,5x35	1000
STB04535	3,5x45	500
STB05535	3,5x55	500



SCREWS SELF-TAPPING TEX, WINDOW

Use:

Self-tapping screw with a TEX hexagonal head pre-drills a hole with a special tip and, together with a sharp thread, cuts a thread into the material.

Main use for screwing sheet metal and aluminium profiles

• Self-tapping screws TEX EZP DIN7504K

Catalog number	Dimension in (mm)	Package
550001	TEX4,2x13	1 000
550002	TEX4,2x16	1 000
550003	TEX4,2x19	1 000
550004	TEX4,2x22	1 000
550005	TEX4,2x25	1 000
550006	TEX4,2x32	500
550007	TEX4,2x38	500
550008	TEX4,8x16	1 000
550009	TEX4,8x19	500
550010	TEX4,8x22	500
550011	TEX4,8x25	500
550012	TEX4,8x32	500
550013	TEX4,8x38	500
550014	TEX4,8x45	200
550015	TEX4,8x50	200
550016	TEX4,8x60	200
550017	TEX4,8x70	200
550018	TEX4,8x80	200
550018	TEX4,8x80	200
550019	TEX5,5x25	500
550020	TEX5,5x32	500
550021	TEX5,5x38	200
550022	TEX5,5x50	200
550023	TEX5,5x80	200
550028	TEX6,3x32	200
550024	TEX6,3x50	200
550029	TEX6,3x60	100
550030	TEX6,3x70	100
550025	TEX6,3x80	100
550031	TEX6,3x90	100
550026	TEX6,3x100	100
550027	TEX6,3x120	100

• Windows parapet screws 4,2 x 25 mm

Catalog number	Dimension in (mm)	Package
SPO25421	white RAL 9010	1000
SPO25422	grey-brown RAL 8019	1000
SPO25423	clay brown RAL 8003	1000
SPO25424	anthracite gray RAL 7016	1000



NEW
in our
range

STRUCTURAL SCREWS INTO WOOD countersunk head VKS

- Self-tapping Chipboard screws with torx head, TORX

Catalog number	Dimension in (mm)	Package
VKS 030030	3 x 30	1 000
VKS 035030	3 x 35	1 000
VKS 040030	3 x 40	500
VKS 045030	3 x 45	500
VKS 020035	3,5 x 20	1 000
VKS 025035	3,5 x 25	1 000
VKS 030035	3,5 x 30	1 000
VKS 035035	3,5 x 35	1 000
VKS 040035	3,5 x 40	1 000
VKS 045035	3,5 x 45	1 000
VKS 050035	3,5 x 50	1 000
VKS 030040	4 x 30	1 000
VKS 040040	4 x 40	500
VKS 045040	4 x 45	500
VKS 050040	4 x 50	500
VKS 060040	4 x 60	200
VKS 070040	4 x 70	200
VKS 080040	4 x 80	200
VKS 040045	4,5 x 40	500
VKS 045045	4,5 x 45	500
VKS 050045	4,5 x 50	500
VKS 060045	4,5 x 60	200
VKS 070045	4,5 x 70	200
VKS 080045	4,5 x 80	200
VKS 030050	5 x 30	1 000
VKS 040050	5 x 40	200
VKS 045050	5 x 45	200
VKS 050050	5 x 50	200
VKS 060050	5 x 60	200
VKS 070050	5 x 70	200
VKS 080050	5 x 80	200
VKS 090050	5 x 90	200
VKS 100050	5 x 100	200
VKS 120050	5 x 120	200
VKS 050060	6 x 50	200
VKS 060060	6 x 60	100
VKS 070060	6 x 70	100
VKS 080060	6 x 80	100
VKS 090060	6 x 90	100
VKS 100060	6 x 100	100
VKS 110060	6 x 110	100
VKS 120060	6 x 120	100
VKS 140060	6 x 140	100
VKS 150060	6 x 150	100

Catalog number	Dimension in (mm)	Package
VKS 160060	6 x 160	100
VKS 180060	6 x 180	100
VKS 200060	6 x 200	100
VKS 220060	6 x 220	100
VKS 240060	6 x 240	100
VKS 260060	6 x 260	100
VKS 280060	6 x 280	100
VKS 300060	6 x 300	100
VKS 80080	8 x 80	100
VKS 100080	8 x 100	100
VKS 120080	8 x 120	100
VKS 140080	8 x 140	100
VKS 160080	8 x 160	100
VKS 180080	8 x 180	100
VKS 200080	8 x 200	100
VKS 220080	8 x 220	100
VKS 240080	8 x 240	100
VKS 260080	8 x 260	100
VKS 280080	8 x 280	100
VKS 300080	8 x 300	50
VKS 320080	8 x 320	50
VKS 340080	8 x 340	50
VKS 360080	8 x 360	50
VKS 380080	8 x 380	50
VKS 400080	8 x 400	50
VKS 080010	10 x 80	50
VKS 100010	10 x 100	50
VKS 120010	10 x 120	50
VKS 140010	10 x 140	50
VKS 160010	10 x 160	50
VKS 180010	10 x 180	50
VKS 200010	10 x 200	50
VKS 220010	10 x 220	50
VKS 240010	10 x 240	50
VKS 260010	10 x 260	50
VKS 280010	10 x 280	50
VKS 300010	10 x 300	25
VKS 320010	10 x 320	25
VKS 340010	10 x 340	25
VKS 360010	10 x 360	25
VKS 380010	10 x 380	25
VKS 400010	10 x 400	25



STRUCTURAL SCREWS IN TO WOOD plate head TVKS

- Self-tapping screws with wafer head, TORX

Catalog number	Dimension in (mm)	Package
TVKS 50060	6x50	100
TVKS 60060	6x60	200
TVKS 70060	6x70	200
TVKS 800060	6x80	200
TVKS 100060	6x100	100
TVKS 120020	6x120	100
TVKS 140040	6x140	100
TVKS 160060	6x160	100
TVKS 180080	6x180	100
TVKS 200060	6x200	100
TVKS 220060	6x220	100
TVKS 240060	6x240	100
TVKS 260060	6x260	50
TVKS 280060	6x280	50
TVKS 300060	6x300	50
TVKS 60080	8x60	100
TVKS 70080	8x70	100
TVKS 080080	8x80	50
TVKS 100080	8x100	50
TVKS 120080	8x120	50
TVKS 140080	8x140	100
TVKS 160080	8x160	50
TVKS 180080	8x180	50
TVKS 200080	8x200	50
TVKS 220080	8x220	50
TVKS 240080	8x240	50

Catalog number	Dimension in (mm)	Package
TVKS 260080	8x260	50
TVKS 280080	8x280	50
TVKS 300080	8x300	50
TVKS 320080	8x320	50
TVKS 340080	8x340	50
TVKS 360080	8x360	50
TVKS 380080	8x380	50
TVKS 400080	8x400	50
TVKS 080010	10x80	50
TVKS 100100	10x100	50
TVKS 120100	10x120	50
TVKS 140100	10x140	50
TVKS 160100	10x160	50
TVKS 180100	10x180	50
TVKS 200100	10x200	50
TVKS 220100	10x220	50
TVKS 240100	10x240	50
TVKS 260100	10x260	50
TVKS 280100	10x280	50
TVKS 300100	10x300	25
TVKS 320100	10x320	25
TVKS 340100	10x340	25
TVKS 360100	10x360	25
TVKS 380100	10x380	25
TVKS 400100	10x400	25



- STAINLESS terrace screws

Catalog number	Dimension in (mm)	Package
VT50400N	5x40	100
VT50500N	5x50	100
VT50600N	5x60	100
VT50700N	5x70	100



WOOD SCREWS hexagonal head

Use:

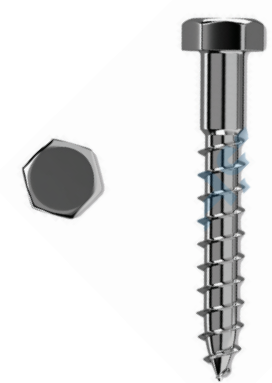
Wood screws ČSN 02 1810.05 (DIN 571), used to connect e.g. of steel plates for structural elements of wooden buildings, to attach the prism to the fixing elements (castle, Y-brackets, spit to the ground and others.) It is made from steel with zinc surface treatment.

- Hexagonal wood screws 6HRH partial thread DIN 571

Catalog number	Dimension in (mm)	Package
SDD 030050	5x30	100
SDD 035050	5x35	100
SDD 040050	5x40	100
SDD 050050	5x50	50
SDD 060050	5x60	50
SDD 070050	5x70	100
SDD 080050	5x80	100
SDD 030060	6x30	100
SDD 035060	6x35	100
SDD 040060	6x40	100
SDD 045060	6x45	100
SDD 050060	6x50	100
SDD 060060	6x60	100
SDD 070060	6x70	100
SDD 080060	6x80	100
SDD 090060	6x90	100
SDD 100060	6x100	100
SDD 120060	6x120	100
SDD 030080	8x30	100
SDD 045080	8x45	100
SDD 050080	8x50	100
SDD 060080	8x60	100
SDD 070080	8x70	100
SDD 080080	8x80	100

Catalog number	Dimension in (mm)	Package
SDD 090080	8x90	100
SDD 100080	8x100	100
SDD 120080	8x120	100
SDD 140080	8x140	50
SDD 150080	8x150	50
SDD 160080	8x160	50
SDD 180080	8x180	100
SDD 050100	10x50	100
SDD 060100	10x60	100
SDD 070100	10x70	50
SDD 080100	10x80	50
SDD 090100	10x90	50
SDD 100100	10x100	50
SDD 120100	10x120	50
SDD 140100	10x140	50
SDD 150100	10x150	50
SDD 160100	10x160	50
SDD 180100	10x180	50
SDD 220100	10x220	50
SDD 260100	10x260	50
SDD 120100	12x100	50
SDD 120120	12x120	50
SDD 120140	12x140	25
SDD 120160	12x160	25
SDD 120180	12x180	25
SDD 120200	12x200	25

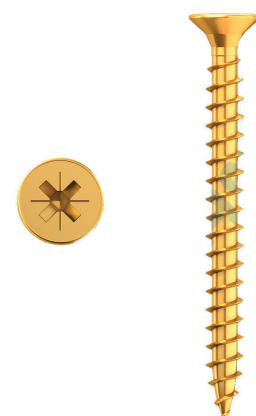
NEW
in our
range



WOOD SCREWS full and partial thread with cross head

- Wood screws PZ with cross head , whole thread

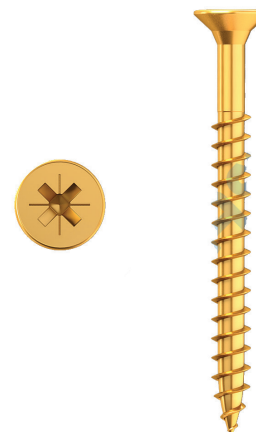
Catalog number	Dimension in (mm)	Package	Catalog number	Dimension in (mm)	Package
PZSD2510	2,5x10	2000	PZSD4040	4,0x40	500
PZSD2512	2,5x12	2000	PZSD4045	4,0x45	500
PZSD2516	2,5x16	2000	PZSD4050	4,0x50	500
PZSD2520	2,5x20	2000	PZSD4060	4,0x60	400
PZSD2525	2,5x25	2000	PZSD4070	4,0x70	250
PZSD2530	2,5x30	1000	PZSD4525	4,5x25	500
PZSD3012	3,0x12	2000	PZSD4530	4,5x30	500
PZSD3016	3,0x16	2000	PZSD4535	4,5x35	500
PZSD3020	3,0x20	2000	PZSD4540	4,5x40	500
PZSD3025	3,0x25	1000	PZSD4545	4,5x45	500
PZSD3030	3,0x30	1000	PZSD4550	4,5x50	250
PZSD3035	3,0x35	1000	PZSD4560	4,5x60	250
PZSD3040	3,0x40	1000	PZSD4560	4,5x60	200
PZSD3045	3,0x45	1000	PZSD4570	4,5x70	250
PZSD3050	3,0x50	500	PZSD5020	5,0x20	500
PZSD3520	3,5x20	2000	PZSD5025	5,0x25	500
PZSD3525	3,5x25	1000	PZSD5030	5,0x30	500
PZSD3530	3,5x30	1000	PZSD5035	5,0x35	500
PZSD3535	3,5x35	1000	PZSD5040	5,0x40	500
PZSD3540	3,5x40	1000	PZSD5045	5,0x45	400
PZSD3545	3,5x45	500	PZSD5045	5,0x45	200
PZSD3550	3,5x50	500	PZSD5050	5,0x50	250
PZSD4020	4,0x12	2000	PZSD5060	5,0x60	250
PZSD4016	4,0x16	1000	PZSD5070	5,0x70	200
PZSD4020	4,0x20	1000	PZSD6040	6,0x40	250
PZSD4025	4,0x25	1000	PZSD6045	6,0x45	250
PZSD4030	4,0x30	1000	PZSD6050	6,0x50	250
PZSD4035	4,0x35	500	PZSD6060	6,0x60	200



NEW
in our
range

- Wood screws PZ with shank and partial thread

Catalog number	Dimension in (mm)	Package	Catalog number	Dimension in (mm)	Package
PZSD4070D	4,0x70	250	PZSD5080D	5,0x80	200
PZSD4080D	4,0x80	200	PZSD50100D	5,0x100	100
PZSD4560D	4,5x60	250	PZSD50120D	5,0x120	100
PZSD4570D	4,5x70	250	PZSD6060D	6,0x60	200
PZSD4580D	4,5x80	200	PZSD6070D	6,0x70	200
PZSD4580D	4,5x80	250	PZSD6080D	6,0x80	150
PZSD5050D	5,0x50	400	PZSD6090D	6,0x90	100
PZSD5060D	5,0x60	250	PZSD60100D	6,0x100	100
PZSD5070D	5,0x70	200	PZSD60110D	6,0x110	100



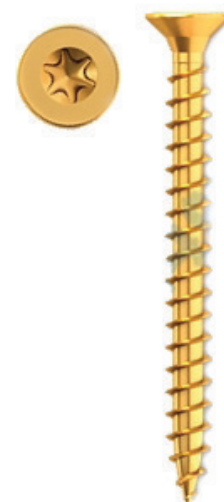
WOOD SCREWS full and partial thread TORX head

- Wood screws with whole thread TORX

Catalog number	Dimension in (mm)	Package
TXSD3012	TX10 3,0x12	2000
TXSD3016	TX10 3,0x16	2000
TXSD3020	TX10 3,0x20	2000
TXSD3025	TX10 3,0x25	1000
TXSD3030	TX10 3,0x30	1000
TXSD3035	TX10 3,0x35	1000
TXSD3040	TX10 3,0x40	1000
TXSD3045	TX10 3,0x45	1000
TXSD3516	TX20 3,5x16	2000
TXSD3520	TX20 3,5x20	2000
TXSD3525	TX20 3,5x25	1000
TXSD3530	TX20 3,5x30	1000
TXSD3535	TX20 3,5x35	1000
TXSD3540	TX20 3,5x40	500
TXSD3545	TX20 3,5x45	500
TXSD3550	TX20 3,5x50	500
TXSD4016	TX20 4,0x16	1000
TXSD4020	TX20 4,0x20	1000
TXSD4025	TX20 4,0x25	1000
TXSD4030	TX20 4,0x30	1000
TXSD4035	TX20 4,0x35	500
TXSD4040	TX20 4,0x40	500
TXSD4045	TX20 4,0x45	400
TXSD4050	TX20 4,0x50	500

Catalog number	Dimension in (mm)	Package
TXSD4060	TX20 4,0x60	400
TXSD4070	TX20 4,0x70	250
TXSD4520	TX20 4,5x20	500
TXSD4525	TX20 4,5x25	500
TXSD4530	TX20 4,5x30	500
TXSD4535	TX20 4,5x35	500
TXSD4540	TX20 4,5x40	500
TXSD4545	TX20 4,5x45	500
TXSD4550	TX20 4,5x50	400
TXSD4560	TX20 4,5x60	250
TXSD5020	TX25 5,0x20	500
TXSD5025	TX25 5,0x25	500
TXSD5030	TX25 5,0x30	500
TXSD5035	TX25 5,0x35	500
TXSD5040	TX25 5,0x40	500
TXSD5045	TX25 5,0x45	400
TXSD5050	TX25 5,0x50	250
TXSD5060	TX25 5,0x60	250
TXSD5070	TX25 5,0x70	200
TXSD6040	TX30 6,0x40	250
TXSD6050	TX30 6,0x50	250
TXSD6060	TX30 6,0x60	200
TXSD6070	TX30 6,0x70	200
TXSD6080	TX30 6,0x80	150

NEW
in our
range



WOOD SCREWS full and partial thread TORX head

- Wood screws TORX with shank and partial thread

Catalog number	Dimension in (mm)	Package
TXSD3030D	TX10 3,0x30/18	1000
TXSD3035D	TX10 3,0x35/24	1000
TXSD3040D	TX10 3,0x40/24	1000
TXSD3045D	TX10 3,0x45/30	1000
TXSD3530D	TX20 3,5x30/18	1000
TXSD3535D	TX20 3,5x35/24	1000
TXSD3540D	TX20 3,5x40/24	500
TXSD3545D	TX20 3,5x45/30	500
TXSD3550D	TX20 3,5x50/30	500
TXSD4030D	TX20 4,0x30/18	1000
TXSD4035D	TX20 4,0x35/24	500
TXSD4040D	TX20 4,0x40/24	500
TXSD4045D	TX20 4,0x45/30	400
TXSD4050D	TX20 4,0x50/30	500
TXSD4060D	TX20 4,0x60/36	400
TXSD4070D	TX20 4,0x70/42	250
TXSD4540D	TX20 4,5x40/24	500
TXSD4545D	TX20 4,5x45/30	500
TXSD4550D	TX20 4,5x50/30	400
TXSD4560D	TX20 4,5x60/36	250
TXSD4570D	TX20 4,5x70/42	200

Catalog number	Dimension in (mm)	Package
TXSD4580D	TX20 4,5x80/50	200
TXSD50100D	TX25 5,0x100/60	100
TXSD50120D	TX25 5,0x120/70	100
TXSD5040D	TX25 5,0x40/24	500
TXSD5045D	TX25 5,0x45/30	400
TXSD5050D	TX25 5,0x50/30	250
TXSD5060D	TX25 5,0x60/36	200
TXSD5070D	TX25 5,0x70/42	200
TXSD5080D	TX25 5,0x80/50	200
TXSD5090D	TX25 5,0x90/60	100
TXSD60100D	TX30 6,0x100/60	100
TXSD60120D	TX30 6,0x120/70	100
TXSD60140D	TX30 6,0x140/70	100
TXSD60160D	TX30 6,0x160/70	100
TXSD60180D	TX30 6,0x180/70	100
TXSD60200D	TX30 6,0x200/70	100
TXSD6050D	TX30 6,0x50/30	250
TXSD6060D	TX30 6,0x60/36	200
TXSD6070D	TX30 6,0x70/42	200
TXSD6080D	TX30 6,0x80/50	150

NEW
in our
range



FARMER SCREWS

Use:

Farmer screws with EPDM washer designed for connecting thin-walled sheets to a wooden structure. They are often used when installing a snow barrier in a sheet metal covering or no other elements that are placed on top of the sheet metal covering. During assembly, it is necessary to use a tightening torque to avoid damage to the rubber washer.

- Farmer screws with zinc backing

Catalog number	Dimension in (mm)	Package
FS48200001	4,8 x 20	250
FS48350002	4,8 x 35	250
FS48600003	4,8 x 60	100

- Farmer screws with EPD washer RAL 3009 RED

Catalog number	Dimension in (mm)	Package
FS48203009	4,8 x 20	250
FS48353009	4,8 x 35	1000
FS48603009	4,8 x 60	100

- Farmer screws with EPD washer 8028 brown

Catalog number	Dimension in (mm)	Package
FS48208004	4,8 x 20	250
FS48358004	4,8 x 35	250
FS48608004	4,8 x 60	100

- Farmer screws with EPD washer RAL 9005 black

Catalog number	Dimension in (mm)	Package
FS48208028	4,8 x 20	250
FS48358028	4,8 x 35	250
FS48608028	4,8 x 60	100

- Farmer screws with EPD washer RAL 7016 anthracite

Catalog number	Dimension in (mm)	Package
FS48209005	4,8 x 20	250
FS48359005	4,8 x 35	250
FS48609005	4,8 x 60	100

- Farmer screws with EPD washer RAL 8004 copper

Catalog number	Dimension in (mm)	Package
FS48207016	4,8 x 20	250
FS48357016	4,8 x 35	250
FS48607016	4,8 x 60	100



DOWEL + SCREWS

Use:

It is used for fixing cardboards and building profiles. The screw can be simply pushed in to the drilled hole with dowel, if necessary, the screw and the dowel can be removed from the hole.

The dowel with a countersunk collar is ideal for the installation of wooden and wood-elements, wall profiles in the construction of ceiling and cardboard walls, skirting boards.

• Dowel + screw with chipboard head POLYPROPYLENE

Catalog number	Dimension in (mm)	Package
440640	66x40	200
440650	66x50	200
440660	66x60	200
440680	66x80	100
440850	88x50	100
440860	88x60	100
440880	88x80	100
4408100	88x100	100
4408120	88x120	100
4408140	88x140	100
4408160	88x160	100
441080	110x80	100
4410100	110x100	100
4410120	110x120	100
4410140	110x140	100
4410160	110x160	100
4410180	110x180	100
4410200	110x200	100
4410220	110x220	100

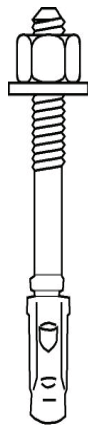


WEDGE ANCHORS

• Wedge anchors

Catalog number	Dimension in (mm)	Package
PK0640	M6x40	200
PK0645	M6x45	200
PK0650	M6x50	200
PK0660	M6x60	200
PK0675	M6x75	200
PK0685	M6x85	200
PK06120	M6x120	150
PK0860	M8x60	100
PK0875	M8x75	100
PK0880	M8x80	100
PK0890	M8x90	80
PK08100	M8x100	80
PK08100	M8x100	100
PK08110	M8x110	80
PK08120	M8x120	80
PK08120	M8x120	100
PK1075	M10x75	80
PK12805	M12x80	50
PK1090	M10x90	100
PK10100	M10x100	100
PK10120	M10x120	50

Catalog number	Dimension in (mm)	Package
PK10125	M10x125	40
PK10140	M10x140	40
PK10175	M10x175	30
PK12100	M12x100	40
PK12110	M12x110	40
PK12120	M12x120	30
PK12130	M12x130	30
PK12135	M12x135	30
PK12140	M12x140	25
PK12145	M12x145	30
PK16100	M16x100	25
PK16125	M16x125	20
PK16150	M16x150	20
PK16170	M16x170	15
PK16200	M16x200	15
PK16220	M16x220	15
PK20110	M20x110	15
PK20125	M20x125	10
PK20150	M20x150	10
PK20175	M20x175	10
PK20205	M20x205	10



MUSHROOM HEAD SREWS

- Mushroom head screws DIN 603 strength 4,8

Catalog number	Dimension in (mm)	Package
11839	M5x16	500
11840	M5x20	500
11841	M5x25	500
11842	M5x30	500
11843	M5x35	200
11844	M5x40	200
11845	M5x45	200
11846	M5x50	200
11847	M5x60	200
11848	M5x70	200
11849	M5x80	200
11850	M6x20	500
11851	M6x25	500
11852	M6x30	500
11853	M6x35	200
11854	M6x40	200
11855	M6x45	200
11856	M6x50	200
11857	M6x60	200
11858	M6x65	200
11859	M6x70	200
11860	M6x75	200
11861	M6x80	200
11862	M6x90	100
11863	M6x100	100
11865	M6x110	100
11866	M6x120	100
11867	M6x130	100
11868	M6x140	100
11869	M6x150	100
11871	M8x20	200
11872	M8x25	200
11873	M8x30	200
11874	M8x35	200
11742	M8x40	200
11875	M8x45	200
11743	M8x50	200
11876	M8x55	200
11744	M8x60	200

Catalog number	Dimension in (mm)	Package
11877	M8x65	200
11745	M8x70	200
11878	M8x75	200
11746	M8x80	200
11747	M8x90	100
11879	M8x100	100
11880	M8x110	100
11881	M8x120	100
11882	M8x130	100
11883	M8x140	50
11884	M8x150	50
11885	M8x160	50
11886	M8x180	50
11887	M8x200	50
11888	M8x220	50
11890	M8x260	50
11891	M10x20	200
11892	M10x25	200
11893	M10x30	200
11894	M10x35	100
11895	M10x40	100
11896	M10x45	100
11897	M10x50	100
11898	M10x55	100
11899	M10x60	100
11900	M10x70	100
11901	M10x80	100
11902	M10x90	100
11903	M10x100	100
11904	M10x110	50
11905	M10x120	50
11906	M10x130	50
11907	M10x140	50
11908	M10x150	50
11909	M10x160	50
11910	M10x180	50



NEW
in our
range



METRIC SCREWS DIN933, DIN931

- Metric hexagonal head screws with partial thread DIN 931

Catalog number	Dimension in (mm)	Package
6708030	Zn M8x 30	200
6708040	Zn M8x 40	200
6708050	Zn M8x 50	200
6708060	Zn M8x 60	200
6708070	Zn M8x 70	200
6708080	Zn M8x 80	200
6708090	Zn M8x 90	100
6708100	Zn M8x100	100
6708120	Zn M8x120	50
6708140	Zn M8x140	50
6710040	Zn M10x 50	100
6710050	Zn M10x 50	100
6710060	Zn M10x 60	100
6710070	Zn M10x 70	100
6710080	Zn M10x 80	100
6710090	Zn M10x 90	100
6710100	Zn M10x100	100
6710120	Zn M10x120	50
6710140	Zn M10x140	50
6712040	Zn M12x 40	100
6712050	Zn M12x 40	100
6712060	Zn M12x 70	50
6712070	Zn M12x 70	50
6712080	Zn M12x 80	50
6712090	Zn M12x 90	50
6712100	Zn M12x 100	50
6712110	Zn M12x 110	50
6712120	Zn M12x 120	50
6712130	Zn M12x 130	50
6712140	Zn M12x 140	50
6712150	Zn M12x 150	50
6714050	Zn M14x 50	50
6714060	Zn M14x 60	50
6714070	Zn M14x70	50
6714080	Zn M14x80	50
6714090	Zn M14x90	50
6714100	Zn M14x100	50
6714110	Zn M14x110	50
6714120	Zn M14x120	50
6714140	Zn M14x140	25
6714150	Zn M14x150	25

- Hexagonalhead screws with partial thread DIN 933

Catalog number	Dimension in (mm)	Package
6608030	Zn M8x 30	200
6608040	Zn M8x 40	200
6608050	Zn M8x 50	100
6608060	Zn M8x 60	200
6608070	Zn M8x 70	200
6608080	Zn M8x 80	100
6608100	Zn M8x 100	100
6610030	Zn M10x 30	200
6610040	Zn M10x 40	100
6610050	Zn M10x 50	100
6610060	Zn M10x 60	100
6610070	Zn M10x 70	100
6610080	Zn M10x 80	100
6610090	Zn M10x 90	100
6610100	Zn M10x100	100
6612020	Zn M12x 20	100
6612030	Zn M12x 30	100
6612035	Zn M12x 35	100
6612040	Zn M12x 40	100
6612050	Zn M12x 50	100
6612060	Zn M12x 60	100
6612070	Zn M12x 70	50
6612080	Zn M12x 80	50
6612100	Zn M12x100	50
6612120	Zn M12x120	50
6614030	Zn M12x120	100
6614040	Zn M14x 40	100
6614050	Zn M14x 50	50
6614060	Zn M14x 50	50
6614080	Zn M14x 50	50
6614100	Zn M14x100	50
6616045	Zn M14x100	20
6616060	Zn M16x 60	50
6616070	Zn M16x 70	25
6616090	Zn M16x 90	25
6616100	Zn M16x100	25
6616120	Zn M16x100	25



NEW
in our
range



HINGES

• Hinges

Catalog number	Dimension in (mm)	Package
400001 - ZS 20	20x17x0,5	200
400002 - ZS 25	25x24x1	100
400003 - ZS 30	30x29x1	100
400004 - ZS 35	35x35x1	100
400005 - ZS 40	40x40x1	100
400006 - ZS 45	45x40x1	100
400007 - ZS 50	50x42x1	50
400008 - ZS 60	60x43x1	50
400009 - ZS 70	70x43x1	50
400010 - ZS 80	80x56x1,5	20

Catalog number	Dimension in (mm)	Package
400012 - Z 50	50 x 25 x 1,5	20
400013 - Z 60	60 x 55 x 2,5	20
400011 - Z 75	75 x 75	20

• Hinges long

Catalog number	Dimension in (mm)	Package
400014 - Z 150a	150 x 25 x 1,5	10
400015 - Z 150b	150 x 35 x 1,5	10
400016 - Z 200a	200 x 35 x 1,5	10
400017 - Z 200b	200 x 45 x 1,5	10
400018 - Z 300a	300 x 45 x 1,5	10
400019 - Z 300b	300 x 35 x 2,5	10
400020 - Z 350	350 x 50 x 1,5	10
400021 - Z 400	400 x 35 x 2,5	10
400022 - Z 100D	100 x 70 x 1,5	10
400023 - Z 135	135 x 120 x 2,5	10

• Decorative hinges - butterfly

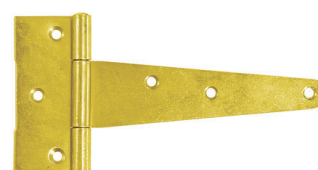
Catalog number	Dimension in (mm)	Package
400024 - ZD 80	80 x 63 x 1,5	20
400025 - ZD 100	100 x 105 x 2,0	10

• Yeg gate latches

Catalog number	Dimension in (mm)	Package
400043 - ZBO 160	160 x 60 x 90 x 3	1
400044 - ZBO 230	230 x 60 x 90 x 3	1
400045 - ZBO 380	380 x 70 x 120 x 3	1

• Záves bránkový ozdobný

Catalog number	Dimension in (mm)	Package
BS0153-100	BS0153-100	1
BS0190-125	BS0190-125	1
BS0154-150	BS0154-150	1
BS0144-200	BS0144-200	1



HINGES, HOLDERS, LATCHES

- Heavy gate latches

Catalog number	Dimension in (mm)	Package
400053 - ZBT 230	230 x 45 x 90 x 3,0	1
400054 - ZBT 310	310 x 45 x 90 x 3,0	1
400055 - ZBT 390	390 x 45 x 90 x 3,0	1
400056 - ZBT 470	470 x 45 x 90 x 3,0	1



- Straight long hinge

Catalog number	Dimension in (mm)	Package
400057 - ZR 300 fi 10	300 x 3,0 Ø 10	1
400058 - ZR 400 fi 10	400 x 3,0 Ø 10	1
400059 - ZR 300 fi 13	300 x 35/4,0 Ø 13	1
400060 - ZR 400 fi 13	400 x 35/4,0 Ø 13	1
400061 - ZR 500 fi 13	500 x 35/4,0 Ø 13	1
400062 - ZR 600 fi 13	600 x 35/4,0 Ø 13	1
400063 - ZR 500 fi 16	500 x 40/5,0 Ø 16	1
400064 - ZR 600 fi 16	600 x 40/5,0 Ø 16	1
400065 - ZR 800 fi 16	800 x 40/5,0 Ø 16	1
400066 - ZR 1000 fi 16	1000 x 40/5, Ø 16	1
400067 - ZR 1200 fi 16	1200 x 40/5, Ø 16	1



- Pin holder

Catalog number	Dimension in (mm)	Package
P1011	Ø 10-11	1
P1025	Ø 10-25	1
P1311	Ø 13-11	1
P1325	Ø 13-25	1
P1611	Ø 16-11	1
P1625	Ø 16-25	1



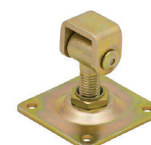
- Box holder - yellow

Catalog number	Dimension in (mm)	Package
BS0901-100	102	10



- Adjustable screw hinge for gate M18 x 90

Catalog number	Dimension in (mm)	Package
ZRDP18/90	M18 x 90	1



- Adjustable screw hinge with plate M 20

Catalog number	Dimension in (mm)	Package
ZRW 20	length -170, M 20	1



BLACK POWDER COATING HINGES

- Triangular black hinge

Catalog number	Dimension in (mm)	Package
BS0196-75	75	1
BS0134-100	100	1
BS0197-125	125	1
BS0135-150	150	1
BS0136-200	200	1



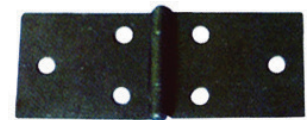
- Riangular braided hinge black

Catalog number	Dimension in (mm)	Package
BS0115-100	102	10
BS0116-150	152	10
BS0117-200	203	10



- Simple hinge black

Catalog number	Dimension in (mm)	Package
BS0072-19	19mm	20
BS0124-25	25mm	20
BS0125-32	32mm	20
BS0126-38	38mm	20
BS0073-45	45mm	20
BS0127-50	50mm	20
BS0128-64	64mm	20
BS0129-75	75mm	20



- Straight hinge black

Catalog number	Dimension in (mm)	Package
BS0023-100x35	100mm x 35mm	1
BS0024-100x45	100mm x 45mm	1
BS0026-150x35	150mm x 35mm	1
BS0027-150x45	150mm x 45mm	1
BS0030-200x45	200mm x 45mm	1
BS0031-250x45	250mm x 45mm	1
BS0032-300x45	300mm x 45mm	1



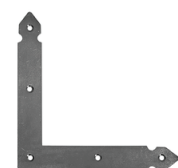
- Gate latch black

Catalog number	Dimension in (mm)	Package
BS1311-150-RH	Right152	1
BS1312-150-LH	Left152	1



- Decorative carob black

Catalog number	Dimension in (mm)	Package
BCI 2102-100	102	1
BCI 2103-200	203	1



FORGED BLACK HINGES

- Decorative forged latch black - leaf

Catalog number	Dimension in (mm)	Package
BCI 1801-225	229	1
BCI1802-300	305	1
BCI 1803-450	457	1



- Decorative forged latch black

Catalog number	Dimension in (mm)	Package
BCI 1804-400	407	1



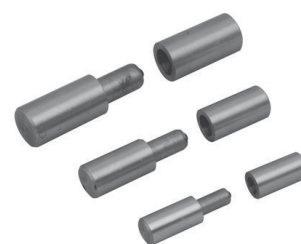
- Decorative small forged hinge black

Catalog number	Dimension in (mm)	Package
BCI 2203-64	64	1
BCI 2204-75	75	1



- Welding hinge with ball

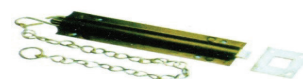
Catalog number	Dimension in (mm)	Package
400036 - ZPG 16	16 x 65	10
400037 - ZPG 18	18 x 70	10
400038 - ZPG 20	20 x 80	10
400039 - ZPG 22	22 x 80	10
400040 - ZPG 25	25 x 100	10
400041 - ZPG 30	30 x 110	10
400042 - ZPG 35	35 x 130	10



GATE LATCHES

- Door barrel bolt on the chain

Catalog number	Dimension in (mm)	Package
BS1613-215	BS1613-215	1



- Gate latch without locking type ZRZ

Catalog number	Dimension in (mm)	Package
400030 - ZRZ 100	100 x 45 x 5,0	10
400031 - ZRZ 120	120 x 45 x 5,0	10
400032 - ZRZ 140	140 x 55 x 5,0	10
400075 - ZRZ 160	160 x 60 x 5,0	10
400076 - ZRZ 180	180 x 60 x 5,0	10
400077 - ZRZ 200	200 x 75 x 5,0	10



- Necked locking gate latch type ZZZ

Catalog number	Dimension in (mm)	Package
400033 - ZZZ 120	120 x 50 x 5,0	10
400034 - ZZZ 140	140 x 55 x 5,0	10
400035 - ZZZ 160	160 x 65 x 6,0	10
400072 - ZZZ 180	180 x 60 x 6,0	10
400073 - ZZZ 200	200 x 75 x 6,0	10



- Decorated Yeg butterfly edge barrel

Catalog number	Dimension in (mm)	Package
400049 - ZGB 51	51 x 50	10
400050 - ZGB 76	76 x 50	10
400051 - ZGB 102	102 x 65	10
400052 - ZGB 127	127 x 68	10



- Yeg square edge barrel bolt type ZG

Catalog number	Dimension in (mm)	Package
400046 - ZG 51	51 x 10	10
400047 - ZG 76	76 x 10	10
400048 - ZG 102	102 x 10	10



- Yeg round edge barrel bolt

Catalog number	Dimension in (mm)	Package
BS1418-51	BS1418-51	1
BS1419-76	BS1419-76	1
BS1420-100	BS1420-100	1



- Grden gate

Catalog number	Dimension in (mm)	Package
MRD 90	90 x 90	1



LOCK HINGES

- Hook with eye

Catalog number	Dimension in (mm)	Package
400026 - HO 65	65	20
400027 - HO 75	75	20
400028 - HO 100	100	20
400029 - HO 150	150	20



- Hinge lock simple

Catalog number	Dimension in (mm)	Package
400068 - ZZJ 100	75 x 25 x 25 x 1,5	10
400069 - ZZJ 140	90 x 50 x 38 x 1,5	10
400070 - ZZJ 170	90 x 80 x 38 x 1,5	10



- Door Chest Hiinge lock

Catalog number	Dimension in (mm)	Package
400071 - ZZBR 150	100 x 50 x 100 x 2,5	1



- Garage door support

Catalog number	Dimension in (mm)	Package
BS0411	300 x 14	1
BS0411250	250 x 14	1



- Shelf holder reinforced white

Catalog number	Dimension in (mm)	Package
BS1903-100	80 x 100	20
BS1904-125	100 x 125	20
BS1905-150	125 x 150	25
BS1906-200	150 x 200	20
BS1907-225	180 x 225	25
BS1908-250	200 x 250	20
BS1909-300	250 x 300	25
BS1910-350	300 x 350	20



SWING HANGERS

- SWING hangers MHA130

Catalog number	Dimension in (mm)	Package
MHA 130	Max. thickness of the upper prism 130mm	1



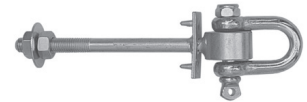
- SWING hangers MHC130

Catalog number	Dimension in (mm)	Package
MHC130	Max. thickness of the upper rail: 130mm	1



- SWING hangers MHD130

Catalog number	Dimension in (mm)	Package
MHD130	Max. thickness of the upper rail: 130mm	1



- SWING hangers round

Catalog number	Dimension in (mm)	Package
MHO 80	80	1
MHO 90	90	1
MHO 100	100	1
MHO 120	120	1



- SWING hangers square

Catalog number	Dimension in (mm)	Package
MHK 90	90 x 90	1



HANGING EYES, TENCIONERS

- Hanging nut DIN582

Catalog number	Dimension in (mm)	Package
19439	M6	25
19440	M8	25
19441	M10	25
19442	M12	20
19443	M14	10



NEW
in our
range

- Hanging eye DIN580

Catalog number	Dimension in (mm)	Package
19444	M6	25
19445	M8	25
19446	M10	25
19447	M12	20
19448	M14	10
19449	M16	10



- Tensioner – hook - hook

Catalog number	Dimension in (mm)	Package
19413	M5	1
19416	M6	1
19419	M8	1
19422	M10	1
19425	M12	1
19428	M14	1
19431	M16	1
19434	M20	1
19437	M24	1



NEW
in our
range

- Tensioner eye – hook

Catalog number	Dimension in (mm)	Package
19414	M5	1
19417	M6	1
19420	M8	1
19423	M10	1
19426	M12	1
19429	M14	1
19432	M16	1
19435	M20	1
19438	M24	1



CHEMICAL ANCHORS, ASSEMBLY FOAM, PZ AND TX TIPS

- Chemical anchor

Catalog number	Dimension	Package
21943	Bossong BCR V-PLUS winter 300ml	1
22583	Bossong BCR V-PLUS winter 400ml	1

- Mounting foam . tubular

Catalog number	Dimension	Package
23204	Tubular mounting foam 750 ml WOLF - GUN	1

- Screw driver bit TORX

Catalog number	Dimension	Package
BT1025	Bit TORX 1/4 TX10x25mm	10
BT1525	Bit TORX 1/4 TX15x25mm	10
BT2025	Bit TORX 1/4 TX20x25mm	10
BT2525	Bit TORX 1/4 TX25x25mm	10
BT2725	Bit TORX 1/4 TX27x25mm	10
BT3025	Bit TORX 1/4 TX30x25mm	10
BT4025	Bit TORX 1/4 TX40x25mm	10

- Screw driver bit PZ - 25 mm

Catalog number	Dimension	Package
HPZ1	PZ1 - 25 mm	10
HPZ2	PZ2 - 25 mm	10
PZ3	PZ3 - 25 mm	10



• Chemical anchor

Catalog number	Dimension in (mm)	Package
TY0001	TP-EV-I Polyest.chem. anchor, without sty- rene,300 ml	6
TY0002	TP-EV-I Polyest. chem. anchor, winter, 300 ml	6



• Chemical adhesives

Catalog number	Dimension in (mm)	Package
TY0003	TYTAN Assembly adhesive FIX 2 GT 290 ml	6
TY0012	Tytan 60 second building PU adhesive for gun 750ml	6
TY0013	Tytan 60 second building PU tubular adhesive 750ml	6



Polyurethane foam

• Adhesive foam for the gun

Catalog number	Dimension in (mm)	Package
TY0004	TP-Low - expansion PU foam for gun 750ml	12
TY0008	HAUSER PU foam for gun 750ml	12
TY0009	HAUSER PU foam gun winter 750ml	12



• Tubular adhesive foam

Catalog number	Dimension in (mm)	Package
TY0010	HAUSER PU tubular foam 750ml	12
TY0011	HAUSER PU tubular foam winter 750ml	12
TY0005	SOFT cleaner of PU foam	12



• Silicone

Catalog number	Dimension in (mm)	Package
TY0006	Neutral sanitary silicone 280 ml, transparent.	6
TY0007	Neutral sanitary silicone 280 ml, white	6



GOLA SET

• 89 pcs - Socket

Catalog number	Content
4489	Socket wrenches "1/4": 4,5,6,7,8,9,10,11,13 mm Socket wrenches "1/2": 10,11,12,13,14,15,16,17,18,19,21,22,24,27,30,32 mm Allen head "1/4": H2,H3,H4,H5,H6,H7 Allen head "5/16": H4,H5,H6,H7,H8,H9, H10,H12 bits torx "1/4": T10,T20,T25,T27,T30,T40,T45 ,T50 bits torx "5/16": T10,T15,T20,T25,T30 bits flat "1/4": 4,5,5,7 bits flat "5/16": 3,4,5,5,7 Bits cross "5/16": PH0,PH1,PH2,PH3 Bits cross "1/4": PH1,PH2,PH3 Bits cross: PZ1,PZ2,PZ3 ratched "1/4" ratched "1/2" shaft "1/4" extension "1/4": 100 mm extension "1/2": 125,250 mm cardan(joint) "1/4" cardan(joint) "1/2" Flexible rod "1/4" Screw driver extension "1/4" connector "1/4" Candle spanner "1/2": 16,21 mm Holder of bits "1/2" Reductions from "3/8" na "1/2" Extended spanners "1/2": 14,15,17,19 mm pliers

• 82 pcs - Socket

Catalog number	Content
4482	Socket wrenches "1/4": 4,5,6,7,8,9,10,11,12,13, 14 mm Socket wrenches "1/2": 13,14,15,16,17,18,19,21, 22,24,27,30,32 mm Allen head "1/4": H3,H4,H5,H6 Allen head "5/16": H7,H8,H10,H12,H14 bits torx "1/4": T8,T10,T15,T20,T25,T30 bits torx "3/8": T40,T45,T50,T55,T60 bit float "1/4": 4,5,5,7 bit float "1/2": 8,10,12 bit cross "5/16": PH3,PH4 bit cross "1/4": PH1,PH2 bit cross "1/4": PZ1,PZ2 bit cross "5/16": PZ3,PZ4 ratched "1/4" ratched "1/2" shaft "1/4" extension "1/4": 50,100 mm extension "1/2": 125,250 mm cardan(joint) "1/4" cardan(joint) "1/2" Flexible rod "1/4" Screw driver extension "1/4" Candle spanner "1/2": 16,21 mm Holder of bits "1/2" Reductions from "3/8" na "1/2" spanner hook+eye: 8,10,12,13,14,15,17,19,22 mm



GOLA SET

• 31 pcs Socket

Catalog number	Content
4431	Socket wrenches "3/8": 6,7,8,9,10,11,12,13,14,15,16,17,18,19,20,21,22,24 mm extended socket wrenches "3/8": 8,9,10,12,13,14 mm ratched "3/8" candle spanner "3/8": 16,21 mm extension "3/8": 75,150 mm cardan (joint) "3/8" redusction of "1/2" na "3/8"

• 38 pcs Socket

Catalog number	Content
4438	Socket wrenches "1/4": 4,4.5,5,5.5,6,7,8,9,10,11,12,13 mm extension "1/4": 50,100 mm cardan(joint) "1/4" shaft "1/4" ratched "1/4" bits flat "1/4": 4,5,6,7 Allen head "1/4": H3,H4,H5,H6,H7,H8 bit cross "1/4": PH0,PH1,PH2,PH3 bity torx- "1/4": T10,T15,T20,T25,T30,T40 barrel wheel

• 16 pcs Socket

Catalog number	Content
4416	Socket wrenches "1/4": 4,4.5,5,5.5,6,7,8,9,10,11,13 mm extensions "1/4": 100 mm cardan(joint) "1/4" shaft "1/4" ratched "1/4" screwdrill extensioner "1/4"



super price



super price



SETS OF KEYS

- 8 Spanners hook + eye
Chrome vanadium steel,
ISO 3318/ISO1085, TS-81,
matte handle, shiny head

Catalog number	Content	
5503	4x7 8x9 10x11 12x13	14x15 16x17 18x19 20x22



super price

- 8 Spanners set eye + eye
Chrome vanadium steel,
ISO 10104, matte handle,
shiny head

Catalog number	Content	
5506	4x7 8x9 10x11 12x13	14x15 16x17 18x19 20x22



super price

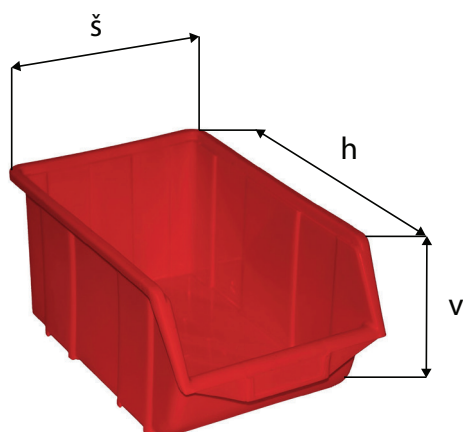
- 12 Spanners set eye+ eye
Chrome vanadium steel,
ISO 10104, matte handle
shiny head

Catalog number	Content	
5507	6 x 7 8 x 9 10 x 11 12 x 13 14 x 15 16 x 17	18 x 19 20 x 22 21 x 23 24 x 27 25 x 28 30 x 32



After registration on our e-shop www.kotvenia.eu we will make available you prices and availability of goods.

PLASTIC BOXES



in stock
in red color,
other colors
are on demand

• Plastic boxes Gr. 1

Catalog number	Dimension v x š x h (mm)	Color
96221111	185x304x489	red
96221112	180x304x489	blue
96221113	185x304x489	green
96221114	185x304x489	yellow
96221115	180x304x489	grey



• Plastic boxes Gr. 2

Catalog number	Dimension v x š x h (mm)	Color
96221121	152x209x335	red
96221122	152x209x335	blue
96221123	152x209x335	green
96221124	152x209x335	yellow
96221125	152x209x335	grey

• Plastic boxes Gr. 3

Catalog number	Dimension v x š x h (mm)	Color
96221131	130x150x230	red
96221132	130x150x230	blue
96221133	130x150x230	green
96221134	130x150x230	yellow
96221135	130x150x230	grey

• Plastic boxes Gr. 4

Catalog number	Dimension v x š x h (mm)	Color
96221141	75x105x161	red
96221142	75x105x161	blue
96221143	75x105x161	green
96221144	75x105x161	yellow
96221145	75x105x161	grey

• Plastic boxes Gr. 5

Catalog number	Dimension v x š x h (mm)	Color
96221151	50x102x90	red
96221152	50x102x90	blue
96221153	50x102x90	green
96221154	50x102x90	yellow
96221155	50x102x90	grey

STANDS FOR CONNECTING, ANCHORING ELEMENTS AND CONSTRUCTION SCREWS

We offer a sales racks, for free , for duration of our cooperation. The possibility of free delievery of inner cardboard - boxes, belong to racks. You can also buy from us plastic boxes for the racks type 2 red color-catalog page No. 35, at discounted price -15% of the price list.



Length -104 cm + hangers on both sides 33 cm

Height -186 cm + advertising board

Depth -30 cm

Loading capacity -1000 kg

DELIVERY

Within 24 hours from receiving of the order

QUANTITY

From one pcs to pallet and truck deliveries

SORTIMENT

Completely range of wooden brackets

QUALITY

100% inspection before shipment, all products

STANDS ANCHOR ELEMENTS, HINGES

We offer a sales racks, for free , for duration of our cooperation. The possibility of free delievery of inner cardboard - boxes, belong to racks. You can also buy from us plastic boxes for the racks type 2 red color-catalog page No. 35, at discounted price -15% of the price list.



Lenght -104 cm + hangers on both sides 33 cm

Height -186 cm + advertising board

Depth-30 cm

Loading capacity -1000 kg

DELIVERY

Within 24 hours from receiving of the order

SORTIMENT

Completely range of wooden brackets

QUANTITY

From one pcs to pallet and truck deliveries

QUALITY

100% inspection before shipment, all products

RACKS, THREADED RODS

We offer a sales racks, for free , for duration of our cooperation.



Length-77 cm

Height-92 cm

Depth-32 cm

DELIVERY

Within 24 hours from receiving of the order

QUANTITY

From one pcs to pallet and truck deliveries

RANGE

Various type of threaded rods

QUALITY

100% Inspection before shipment all products

FIXING

your dreams with us

FIXING, s.r.o.

M. R. Štefánika 44
026 01 Dolný Kubín

☎ 0911 713 033 CEO - Bulvas Ivan

☎ 0911 703 014, ✉ obchodnik3@fixing.at
Sales manager district BA, TN, TT, NR, BB, ZA - Duračka Matúš

☎ 0901 730 730, ✉ obchodnik2@fixing.at
Sales manager district ZA, KE, PO, BB, ZA - LM - Slavomíra Kuhnová

Receiving orders ✉ predaj@fixing.at

IČO: 46467386 • DIČ: 2023390204 • IČ DPH: SK2023390204



PLACES OF OPERATION / WAREHOUSE: METALES FIXING, s.r.o, Hrádok 228, 027 53 Istebné